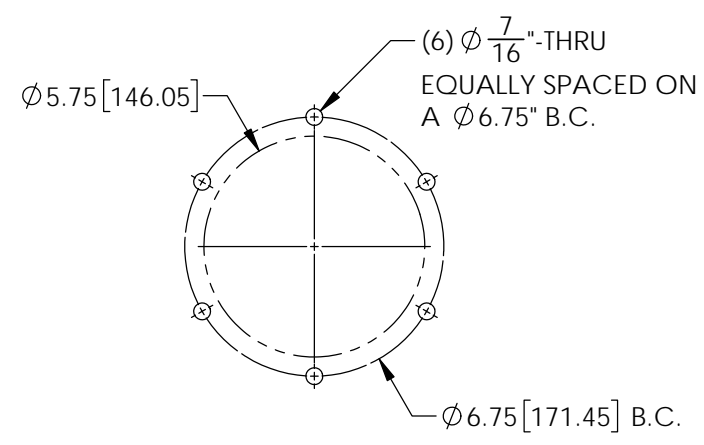
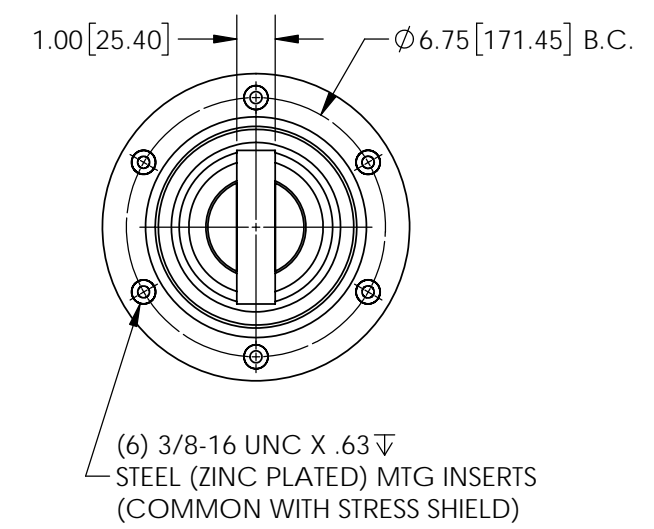
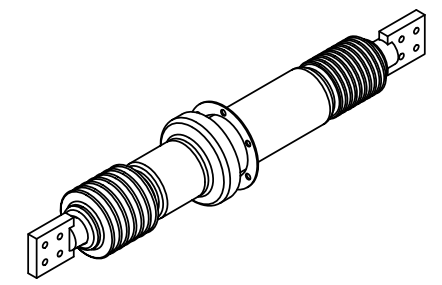
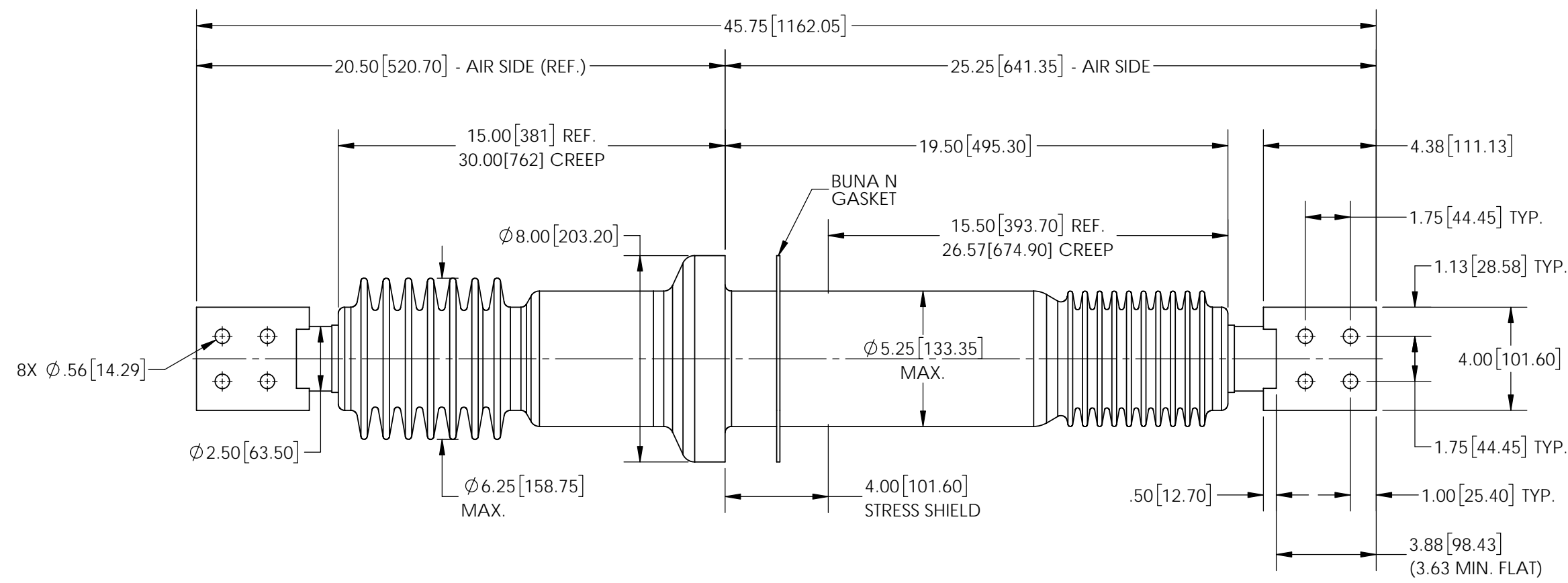


REVISIONS					
REV.	DATE	ECN #	DESCRIPTION	BY	APP'D



RECOMMENDED MOUNTING
DETAIL

NOTES:

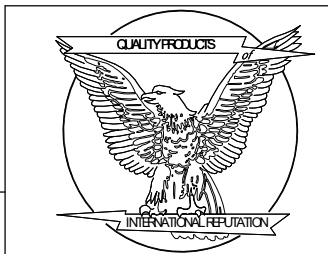
1. ALL CONTACT SURFACES TO BE CLEAN & FREE OF FLASH
- MATERIAL
1. CYCLOALIPHATIC EPOXY (U.V. EXPOSED) COLOR GRAY
 2. CONDUCTOR - HD ETP COPPER C11000, TIN PLATED

SPECIFICATIONS:

1. MANUFACTURED IN ACCORDANCE WITH IEEE C57.19.01-2000
2. RATED (MAX.) VOLTAGE 38kV
3. POWER FREQUENCY WITHSTAND 80kV
4. BASIC IMPULSE LEVEL 200kV
5. NOMINAL CURRENT RATING 3000 AMPS
6. TEMPERATURE CLASSIFICATION..... -40 °C TO +105 °C
7. APPROXIMATE WEIGHT 109 lb

PROPRIETARY AND CONFIDENTIAL
THE INFORMATION CONTAINED IN THIS DRAWING IS THE SOLE PROPERTY OF H-J INTERNATIONAL, INC. ANY REPRODUCTION IN PART OR AS A WHOLE WITHOUT THE WRITTEN PERMISSION OF H-J INTERNATIONAL, INC. IS STRICTLY PROHIBITED.

TOLERANCES (EXCEPT AS NOTED)	
ONE PLACE MM	±1.50
TWO PLACE MM	±0.75
TWO PLACE DEC.	±.060
THREE PLACE DEC.	±.030
FRACTIONS	± 1/16"
ANGLES	2°



APPROVED BY	...	DATE	.../.../...
CHECKED BY	CJT	DATE	09/20/2016
DRAWN BY	CLS	DATE	09/20/2016
TOOL NO.	T20-510-1		
PRODUCT GRP.	2000 SERIES		

H-J INTERNATIONAL, INC.
3010 HIGH RIDGE BLVD. HIGH RIDGE, MO. 63049 USA
PHONE 1-636-677-3421 FAX 1-636-376-1915

*38kV/3000A (MAX.)
POWER APPARATUS
BUSHING*

MATERIAL	SEE DRAWING	QTY.	
DRAWING NO.	20-510-100		
SCALE	1:5	SIZE	B
REV.	0	SHEET	1 OF 1